



THINGS TO DO



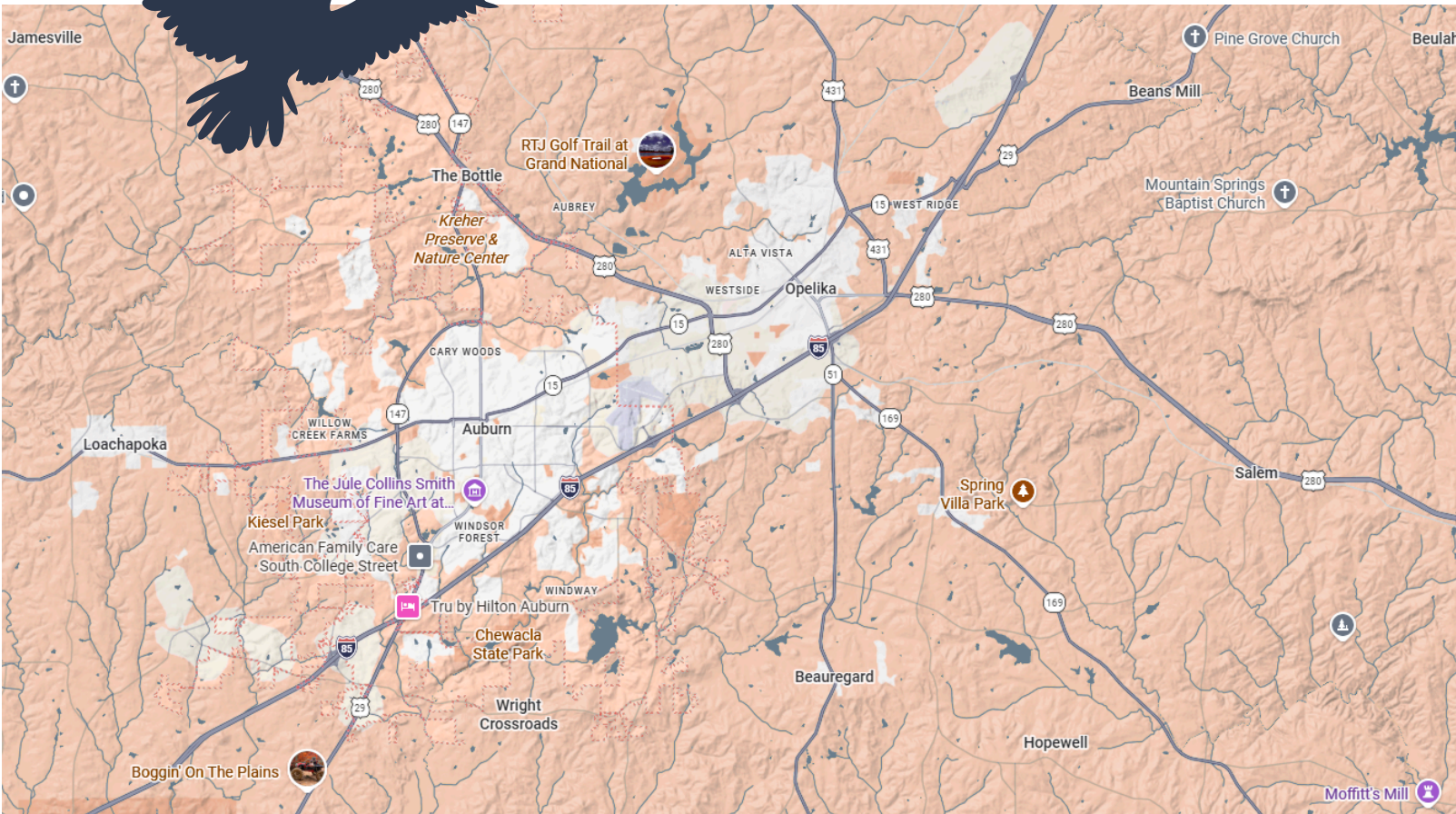
Local & Regional Guide



Table of Content

AUBURN/OPELIKA	03	PINE MOUNTAIN, GA	31
WAVERLY, AL	08	LAGRANGE, GA	33
CHILDERSBURG, AL	10	COLUMBUS, GA	35
LAKE MARTIN	12	MORE MAGIC	37
TUSKEGEE, AL	14		
MONTGOMERY, AL	16		
WETUMPKA, AL	26		
RURAL STUDIO- NEWBERN, AL	28		

Explore Auburn/Opelika



The Auburn-Opelika area in eastern Alabama is a rapidly growing, energetic, and historic community known as "the loveliest village on the plains". Anchored by Auburn University, the area offers a vibrant college-town atmosphere combined with charming, historic downtowns, scenic nature spots, and a strong, diverse economic base

THINGS TO DO IN THE AUBURN/OPELIKA AREAS:

<https://www.aotourism.com/things-to-do/top-reasons-to-love-auburn-and-opelika/>

ACTIVITIES FOR KIDS:

- Kids can enjoy <https://playfuntastic.com/> with soft play areas, arcades, climbing walls.
- <https://surgefun.com/locations/opelika/> trampoline park, climbing features, arcade games.
- <https://www.bowlero.com/location/bowlero-auburn-al> for bowling and arcade games.
- <https://www.goodtimesbowling.com/> for bowling, arcade games & escape rooms.
- <https://rocknrollpinball.com/> over 30 pinball machines & live music events.
- <https://heydaymarketauburn.com/> Hey Day Green Space with cornhole and small putting green (outdoor)
- <https://www.auburnal.gov/parks/facilities/Inclusive-Playground/>
- <https://www.auburnal.gov/parks/facilities/hickory-dickory-park/>

ACTIVITIES FOR ADULTS:

- Mural tour <https://www.aotourism.com/things-to-do/trails-of-ao/visit-the-murals-of-auburn-opelika/>
- <https://www.marksthespot.net/> Ax throwing
- <https://www.bunkersauburn.com/> restaurant/bar, live music & golf/sports simulator
- Tiger on the Green- <https://tigeronthegreen.com/auburn-tiger-on-the-green-lawn-golf>
- <https://www.tigertownsports.com/> Golf is just the beginning. 18 holes, 3 sand courts, 1 high-definition sports simulator, and a full-service bar mean endless fun for everyone
- <https://www.goodtimesbowling.com/> for bowling, arcade games & escape rooms.
- <https://www.whistlestopbrewshop.com/> Coffee, Tea, Kombucha & Beer
- [John Emerald Distilling Company – A True Southern Spirit](#) a small batch craft distillery located in downtown Opelika, Alabama, offering tours, cocktails, and bottle sales in house.
- [New Realm Brewing](#) at Auburn University is the only brewery in Auburn and one of, if not the only, teaching brewery in the country. New Realm not only carries nine taps of some of the freshest and most flavorful beer in the state of Alabama, but its team works hand in hand with the University to teach the science and business of brewing and facilitate research in brewing sciences.

GET OUT AND PLAY:

- [Robert Trent Jones Grand National](#)
- Pickleball - Courts on Campus, <https://www.opelika-al.gov/852/Opelika-Pickleball-Facility> , <https://www.auburnal.gov/pickleball/>
- Tennis
- AU Campus Rec & Wellness
- <https://www.opelika-al.gov/391/Opelika-Sportsplex-Aquatics-Center> - From pickleball to racquetball, swimming pool to splash park, cardio to weights, indoor and outdoor tracks for walking to running

PAMPER YOURSELF WITH A SPA EXPERIENCE:

- RTJ Spa [The Spa at Grand National - RTJ Spa Trail](#)
- Laurel Hotel Spa <https://www.thelaurelspa.com/>
- Spa 180 <https://www.180spa.com/>
- Shine Facial Bar [Auburn's Express Facial Bar](#)

IMMERSE YOURSELF IN THE ARTS:

- <https://www.aotourism.com/things-to-do/arts-and-culture/>
- <https://www.aotourism.com/things-to-do/trails-of-ao/local-art-trail/>
- <https://www.aotourism.com/things-to-do/music-and-nightlife/>
- [The Jule Collins Smith Museum of Fine Art](#) includes works by masters like Picasso and Renoir, among others.
- <https://opelikaarthaus.com/> The Opelika Art Haus has provided working studio spaces, gallery exhibits, and educational opportunities for those passionate about the arts. Architect Behzad Nakhjavan designed the entire complex, including the space's unique staircase/fountain.
- Pottery [Home - Glazed Pottery](#) OR [The Fired Fox Art Studio](#)

HISTORY:

- <https://www.opelikachamber.com/assets/pdf/Historic+Opelika+Walking+Trail+Brochure+RGB-compressed/>
- <https://www.leecountyhistoricalsociety.org/buildings-exhibits> Pioneer Park serves as a historical destination that offers many great exhibits, events, and displays. The museum is currently made up of nine structures: the Old Trade Center, the Ruth Purdy Speake Cabin, the Taylor Whatley Building, the Blacksmith Shop, Doctor McLain's Office, the Loachapoka Gin Office, the Cook House, and a reconstruction of the Loachapoka Jail.
- Pebble Hill [CAH - College of Liberal Arts at Auburn University](#) Pebble Hill operates as a historic house museum and the home of Auburn University's Caroline Marshall Draughon Center for the Arts & Humanities. The preserved 1847 Greek Revival cottage, listed on the National Register of Historic Places, offers visitors insight into antebellum residential architecture in east Alabama and the early cultural history of the Auburn area.
- Nunn-Winston House [Kiesel Park - City of Auburn](#) The Nunn-Winston House, located within Kiesel Park, is a historic residence dating to around 1850 and is considered one of Auburn's finest examples of antebellum Greek Revival architecture. The house was built by Samuel Nunn and reflects architectural characteristics typical of the period, including a symmetrical façade and columned porch.
- Tuskegee Airmen National Historic Site [Tuskegee Airmen National Historic Site \(U.S. National Park Service\)](#) The Tuskegee Airmen National Historic Site, located at Moton Field in Tuskegee, Alabama, preserves the primary flight training site of the Tuskegee Airmen, the first African American military aviators in the United States Army Air Forces during World War II. The historic airfield includes restored hangars, training facilities, and exhibits that interpret the story of the pilots, mechanics, and support personnel who trained there between 1941 and 1946. Visitors can explore Hangar No. 1, a restored World War II-era structure, which houses museum exhibits and interpretive displays about the training program and its historical impact.

ENJOY THE OUTDOORS:

- [The Donald-E Davis Arboretum](#) The Arboretum is approximately 13.5 acres with over two miles of walking trails which are easily accessible for strollers.
- <https://kpnc.auburn.edu/> The Kreher Preserve & Nature Center offers 119 acres of protected forest just minutes from downtown Auburn. Several miles of flat, well-maintained walking trails provide a peaceful setting for casual walks and family outings. A scenic pond and pavilion offer a quiet place to relax or take photos, while children can enjoy the nature playground and discovery areas designed to encourage outdoor exploration. The preserve is also home to a new Environmental Education Building that provides modern classrooms, exhibits, and event space designed to enhance environmental learning while blending sustainably into the surrounding forest.
- <https://www.auburnal.gov/parks/facilities/kiesel-park/> Auburn's largest city park, covering about 124 acres of open green space, walking trails, and gardens just a few minutes from downtown. The park is known for its wide scenic meadows, wooded paths, and relaxed atmosphere, making it a popular place for walking, picnicking, and enjoying the outdoors.
- <https://www.auburnal.gov/parks/facilities/town-creek-park/> Town Creek Park is a quiet natural area located just minutes from downtown Auburn, offering visitors a peaceful setting along Town Creek. The park features wooded walking trails, boardwalks, and a scenic suspension bridge that crosses the creek, providing a unique vantage point of the surrounding forest and water. Its shaded paths and natural landscape make it a favorite spot for walking, jogging, bird-watching, and photography. Town Creek Park also features one of Auburn's inclusive playgrounds, designed so children of different physical abilities can play together.
- <https://www.auburnal.gov/parks/facilities/Ann-Pearson-Park/> Ann Pearson Park is a newer family-oriented park located on Shelton Mill Road in Auburn. The park was designed primarily for families and children and features a large modern playground, splash pad, picnic areas, and open green space for play and relaxation. Shaded seating and pavilions make it a convenient spot for family gatherings and casual outdoor breaks, while the splash pad provides a popular way for kids to cool off during Alabama's warmer months.
- [Chewacla State Park](#), Chewacla State Park spans about 696 acres just outside Auburn, Alabama. Camping, swimming, boating, fishing, geocaching. Several miles of hiking trails and world class biking trails. Swimming, boating (canoes, kayaks, and paddle boards), fishing in the 26 acre Chewacla Lake with waterfall teeming with Largemouth Bass, Crappie, and several species of Catfish and Sunfish. Fishing is allowed with an Alabama Fishing License and guests must follow the general Alabama Fishing Regulations.
- [AU Children's Garden and Transformation Garden](#) - The Auburn University Children's Garden and Transformation Garden are unique educational outdoor spaces located near the university campus. The Children's Garden is designed as an interactive environment where children can explore nature through hands-on garden features, play structures, and learning areas that encourage curiosity about plants, food, and the environment. Adjacent to it, the Transformation Garden serves as an accessible community garden and wellness space, featuring raised planting beds, gathering areas, and programs focused on gardening, nutrition, and healthy living. Together, the gardens provide a welcoming place for visitors of all ages to experience hands-on learning, outdoor play, and community engagement centered around plants and sustainable living.

SHOPPING:

Downtown Auburn <https://downtownauburnonline.com/retail>

<https://artifactoryauburn.com/>

<https://www.themakerandmerchant.com/> located at the [Village Mall](#) - home to a collection of small businesses, makers and entrepreneurs that together create a unique brick-and-mortar experience

<https://www.auburn-pharmacy.com/> We proudly feature a curated selection of products from talented Auburn-area vendors, including hand made gifts, unique home décor, and one-of-a-kind treasures. Shopping here means supporting local creators while discovering pieces full of charm, creativity, and character.

<https://theflowerstoreauburn.com/> The Flower Store is an Auburn institution, boasting stunning floral arrangements, lovely home décor, high-end gifts, fine china, gourmet treats and much more.

<https://ourhomepharmacy.com/> Our Home Pharmacy is a locally owned shop in the Auburn–Opelika area that blends boutique shopping with a welcoming coffee bar. Visitors can browse a curated selection of apparel, home décor, gifts, and specialty items, many from regional makers, while enjoying a handcrafted coffee or drink.

<https://www.opelika-al.gov/397/Tiger-Town>

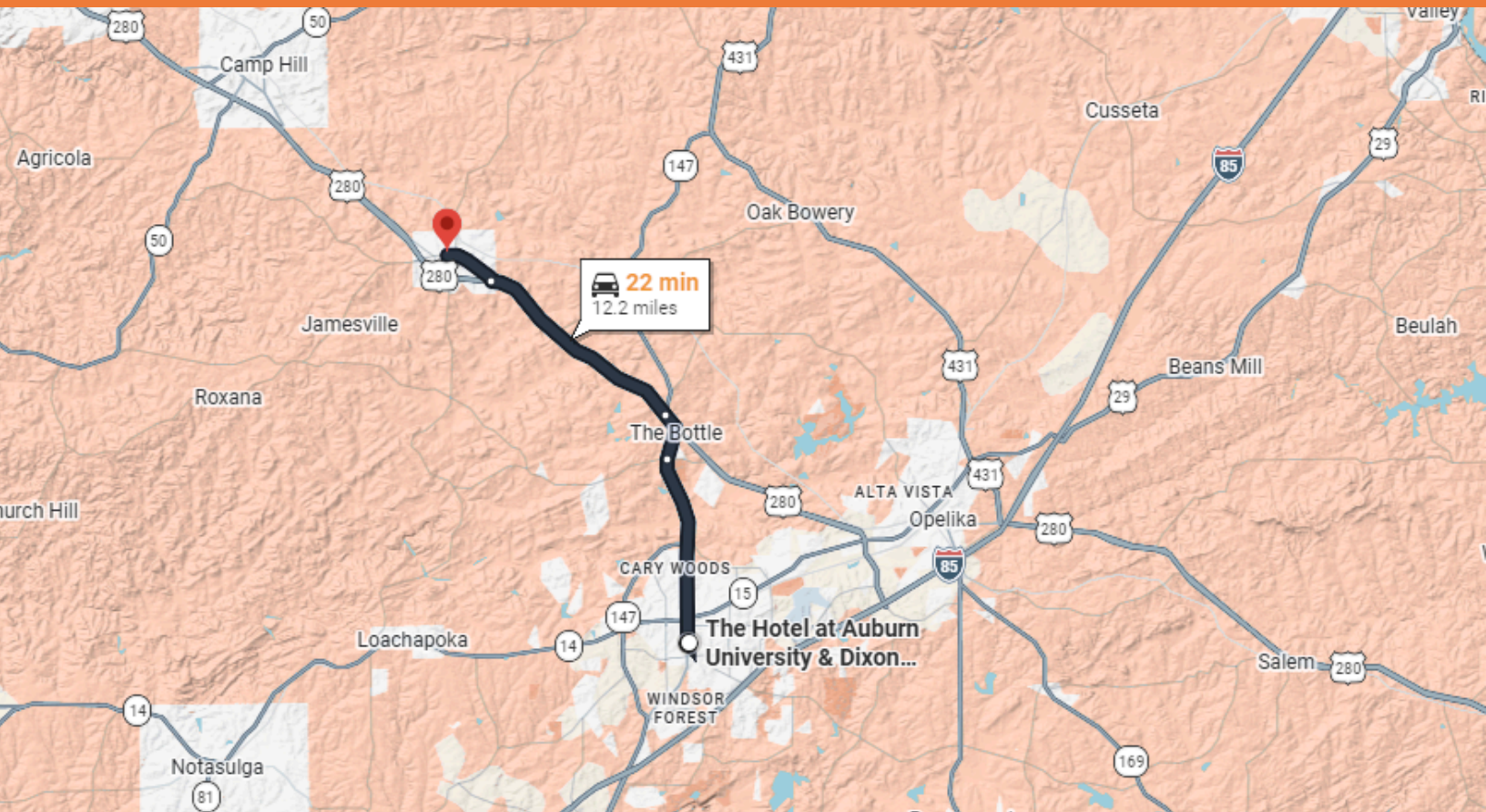
<https://shopbotanic.com/> Shopping at Botanic offers a different experience from a typical retail center. The property combines horticulture, dining, and curated shopping in a campus-style setting built around gardens and greenhouses. Visitors can browse the Garden Shoppe, which carries plants, pottery, gardening tools, and home décor inspired by nature, along with seasonal items and planters. The Market features specialty foods, coffee, pastries, and locally made products such as jams and gourmet provisions. The complex also highlights artwork and goods from regional artists and makers, making it a good place to find unique gifts from the Southeast

<https://angelsmall.info/> - Angel's Antique & Flea Mall - At over 68,000 sq. ft., Angels has over 400 vendors and attracts thousands of customers from around the globe. "Lucky" magazine rated Angels as one of the Top 3 Best antique malls in the South and newspaper readers have voted Angels as the area's best antique mall in Alabama and Georgia!

Historic Downtown Opelika shopping <https://www.opelikamainstreet.org/new-page-1>

Explore Waverly, AL

With a population of approximately 180 residents (and not a single streetlight downtown), Waverly, Alabama, isn't a small town; it's a tiny one. But what this hamlet hidden between Auburn and Lake Martin lacks in size, it makes up for with massive amounts of throwback charm. Pick a pretty day and wander over to Waverly for a few hours of chatting with friendly folks, digging into good food, and scouring shelves for cool finds.



15 MIN DRIVE

Waverly, AL (15 minute drive)

With a population of approximately 180 residents (and not a single streetlight downtown), Waverly, Alabama, isn't a small town; it's a tiny one. But what this hamlet hidden between Auburn and Lake Martin lacks in size, it makes up for with massive amounts of throwback charm. While there's not a lot to see and do, every bit of it is worth experiencing, so pick a pretty day and wander over to Waverly for a few hours of chatting with friendly folks, digging into good food, and scouring shelves for cool finds.

<https://standarddeluxe.com/> *Long before any of those other shops opened their doors, Scott Peek helped put Waverly on the map when he moved here and opened his nationally renowned Standard Deluxe graphic design and screen-printing business in 1991. Peek later began hosting the Waverly "Old 280" Boogie -- a music, food, arts and cultural festival that takes place every spring -- in the yard outside his sprawling Standard Deluxe headquarters, which now also includes a café. Don't leave town without getting a Standard Deluxe T-shirt or trucker hat, which are available in the gift shop.*

<https://thewaverlylocal.com/> *Housed in a century-old building that was most recently home to Waverly's old Yellow Hammer Restaurant, The Local, as the regulars call it, offers a nostalgic charm, a laid-back vibe and an inspired but unpretentious menu. Among the appetizers are bacon-wrapped Wickles Pickles okra and pimento cheese with sourdough frybread, and the entrees include pan-roasted Atlantic salmon, blue crab cakes and a braised pork and collard green lasagna.*

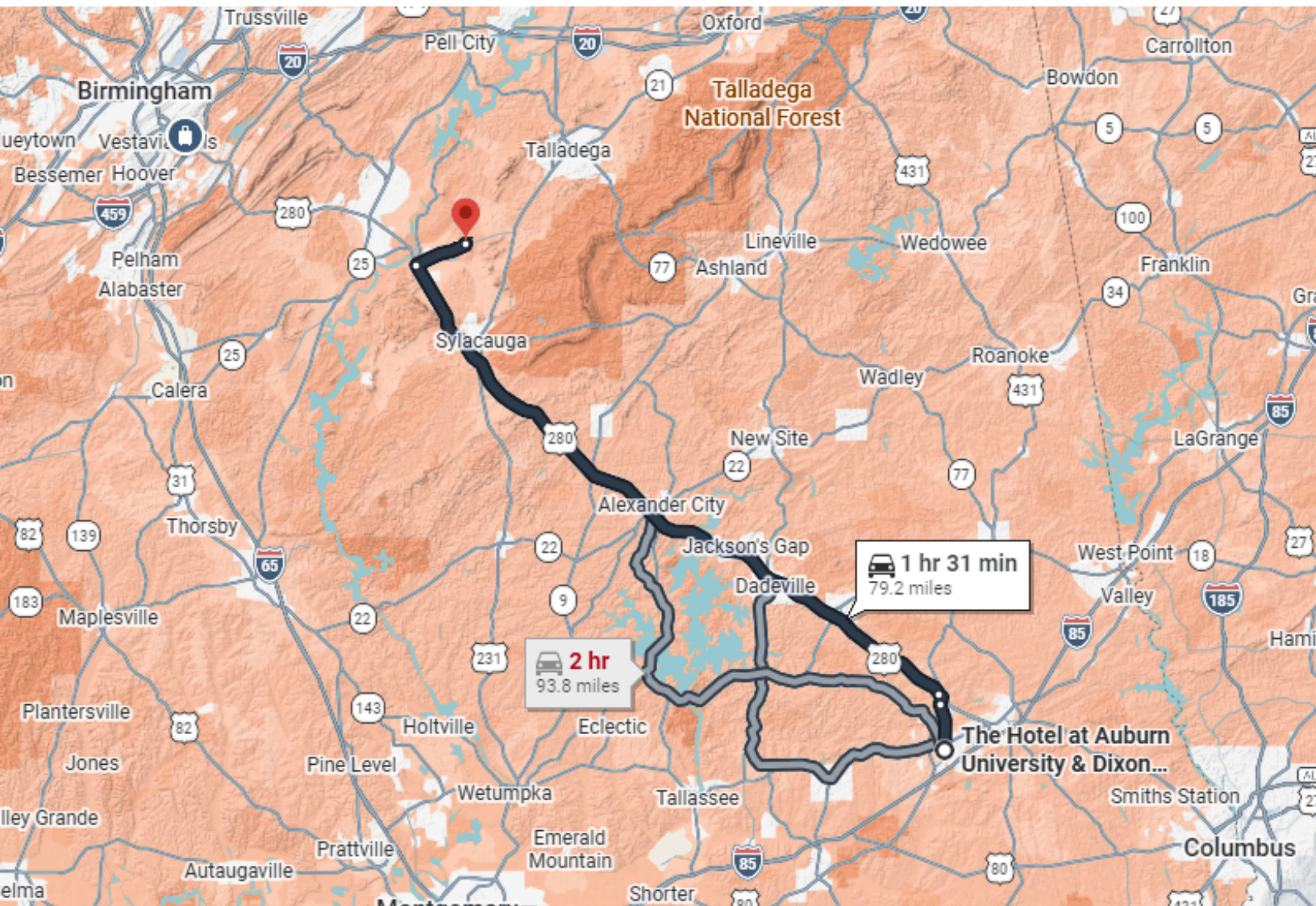
<https://www.facebook.com/wildflour.microbakery/> *customers know that if you want to get one of the Wild Flour Bakery's daily sandwich specials, you'd better be there when the doors open at 10 a.m. But if you miss out on the specials, the pastry case is filled with plenty of other sweet and savory treats, including raspberry turnovers, key lime and hibiscus tarts, and jalapeno and cheddar kolaches.*

Shop at <https://www.figandwasp.com/> *Whether you're buying or just browsing, the Fig & Wasp has a little of everything to pique your interest -- from antique furniture to hand-crafted pottery to imported rugs, as well as garden tools, kitchen supplies and travel accessories.*



Explore Childersburg, AL

Childersburg, Alabama, located in Talladega County along the Coosa River, is widely recognized as one of the oldest continuously occupied cities in the United States, dating back to a Native American village visited by Hernando de Soto in 1540. With a population of roughly 4,700, this historic town offers a small-town atmosphere, key attractions like Majestic Caverns and Kymulga Grist Mill, and a low cost of living.



1 HR 30 MIN DRIVE

Childersburg (1 hour 20 min drive)

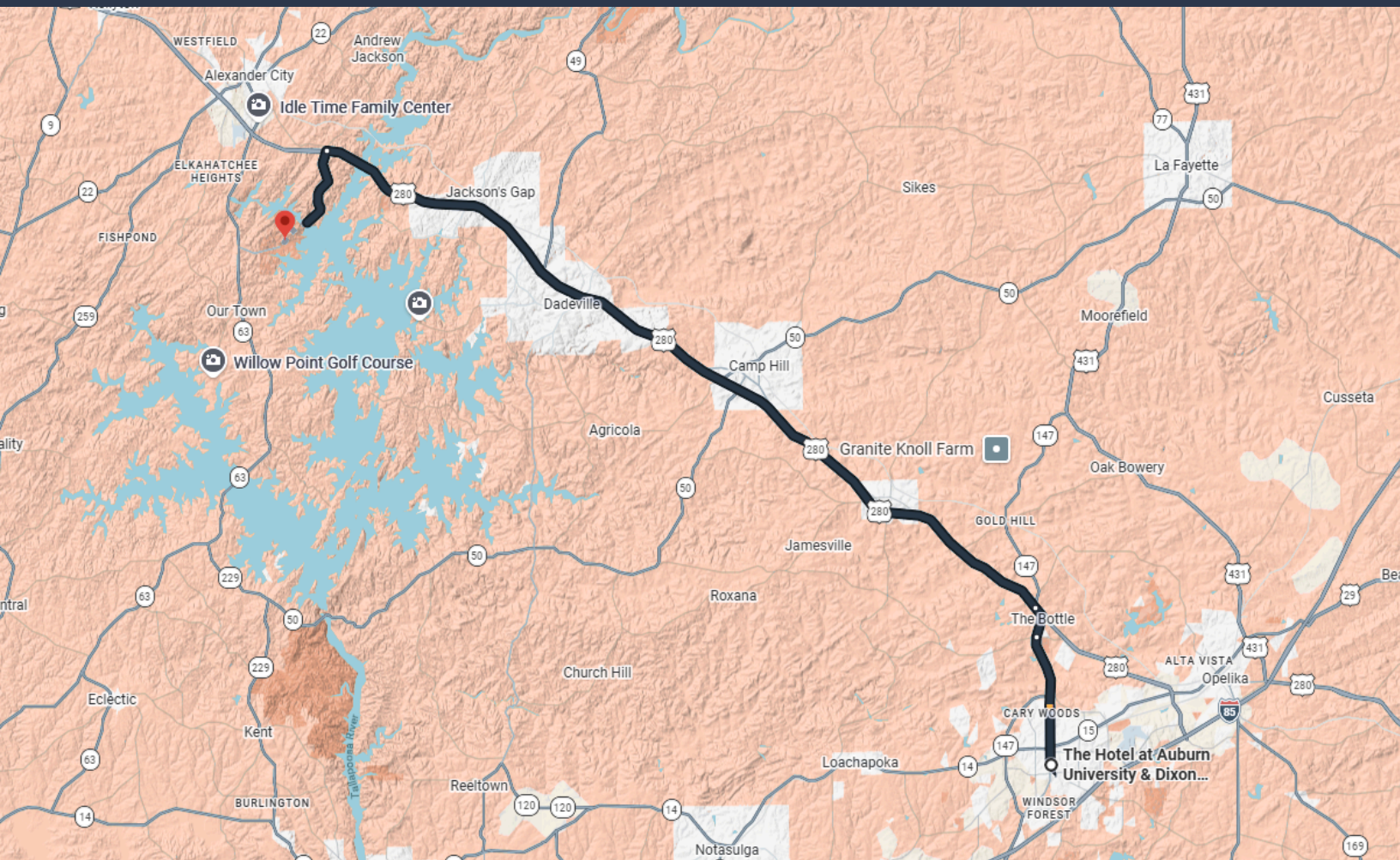
<https://majesticcaverns.com/> - *Nestled in the foothills of the Appalachian Mountains in Childersburg, Alabama, Majestic Caverns is a site rich in history. In 1796, George Stiggins, a presidential agent, wrote to President George Washington describing the beauty of the cave, making Majestic Caverns the first cavern on record in the United States. In addition to being the first cavern on record, Majestic Caverns is also noted for having one of the largest accumulations of onyx-marble stalagmites and stalactites in the world. The caverns have regular tours every hour that allow guests to learn about caverns in general and about the history of this beautiful subterranean wonder. There are over twenty attractions on the land above the cave, making Majestic Caverns the perfect visit for those seeking adventure, the great outdoors, and fun with family or friends.*



The 12-story Kymulga Cathedral Cave – which takes its name from a Native American term meaning “healing all,” is the majestic centerpiece of DeSoto Caverns. (DeSoto Caverns)

Explore Lake Martin

Lake Martin is a large, 44,000-acre reservoir in Alabama, formed by the Martin Dam on the Tallapoosa River in 1926. Known for its clear water, over 750 miles of wooded shoreline, and popular spots like Chimney Rock, it is a major recreation hub for boating, fishing, and camping. The lake is largely a second-home community surrounded by Alexander City, Dadeville, and Eclectic.



45 MIN DRIVE

Lake Martin Activities (45 min drive)

Walker Bynum Tower Loop Hiking Trail, Dadeville, Alabama

The Smith Mountain Fire Tower hike in Dadeville, AL, involves a paved but steep trail to the top of a historic 90-foot fire tower. The main trail is about 0.4 miles to the base of the tower, and the full loop trail is roughly 0.7 miles. From the top, you can see views of Lake Martin and the Talladega National Forest, and it is accessible year-round.

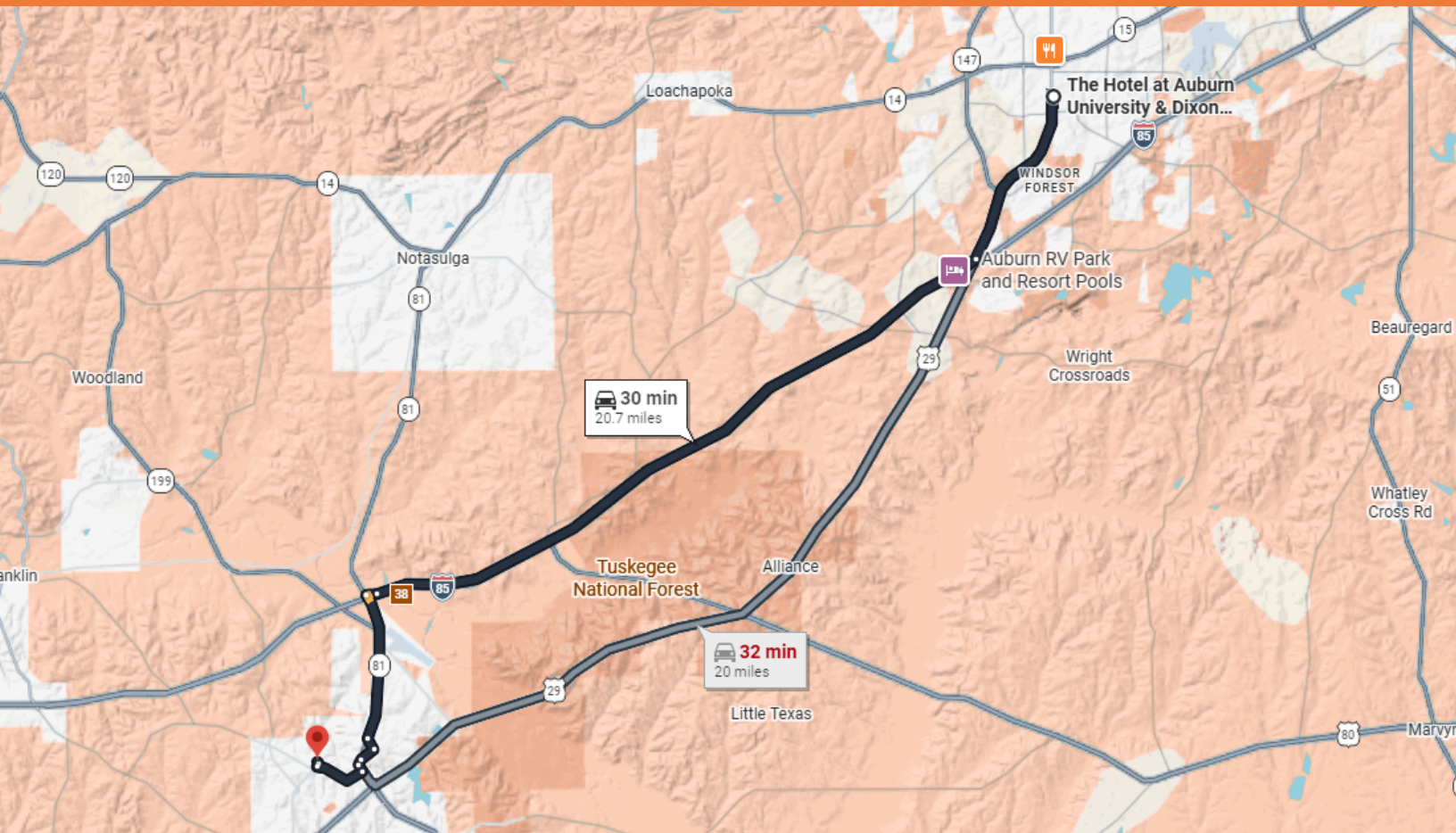
Zipline Wind Creek State Park - Alabama - Screaming Eagle

Boat Tours – 3 hours on Lake Martin (currently \$80/person) Lake Martin Tours – Experience Lake Martin, AL



Explore Tuskegee, AL

Tuskegee, Alabama, is a historic city in Macon County (founded 1833, incorporated 1843) with a population of roughly 8,900. Known for its profound African American heritage, it is home to Tuskegee University, the Tuskegee Airmen National Historic Site, and the Tuskegee History Center. It serves as a, educational, and cultural hub near Montgomery



30 MIN DRIVE

Tuskegee, AL (30 minute drive)

Historic Sites & Museums

- **Tuskegee Airmen National Historic Site:** *Learn about the pioneering African-American pilots of WWII at Moton Field, featuring museums, a P-51 replica, and films.*
- **George Washington Carver Museum:** *Located within the Tuskegee Institute NHS, highlighting Carver's work and the gravesites of Carver and Booker T. Washington.*
- **The Oaks:** *Tour the historic 15-room home of Booker T. Washington, founder of Tuskegee Institute.*
- **Tuskegee History Center:** *Explores the distinct cultures and histories of Tuskegee and Macon County.*
- **Harris Barrett School:** *A historic school built by students, now housing exhibits on Black education.*
- **Tuskegee Chapel:** *The building was completed in 1969 with 1,200,000 bricks made and laid by Tuskegee students.*

Nature & Recreation

- **Tuskegee National Forest:** *Features trails like the Bartram Trail and Pleasant Hill Trail, plus the Taska Recreation Area for picnics.*
- **Lake Tuskegee:** *A city park with fishing, boating, playgrounds, and picnic spots.*

Landmarks

- **Macon County Courthouse:** *A historic courthouse on the National Register of Historic Places.*

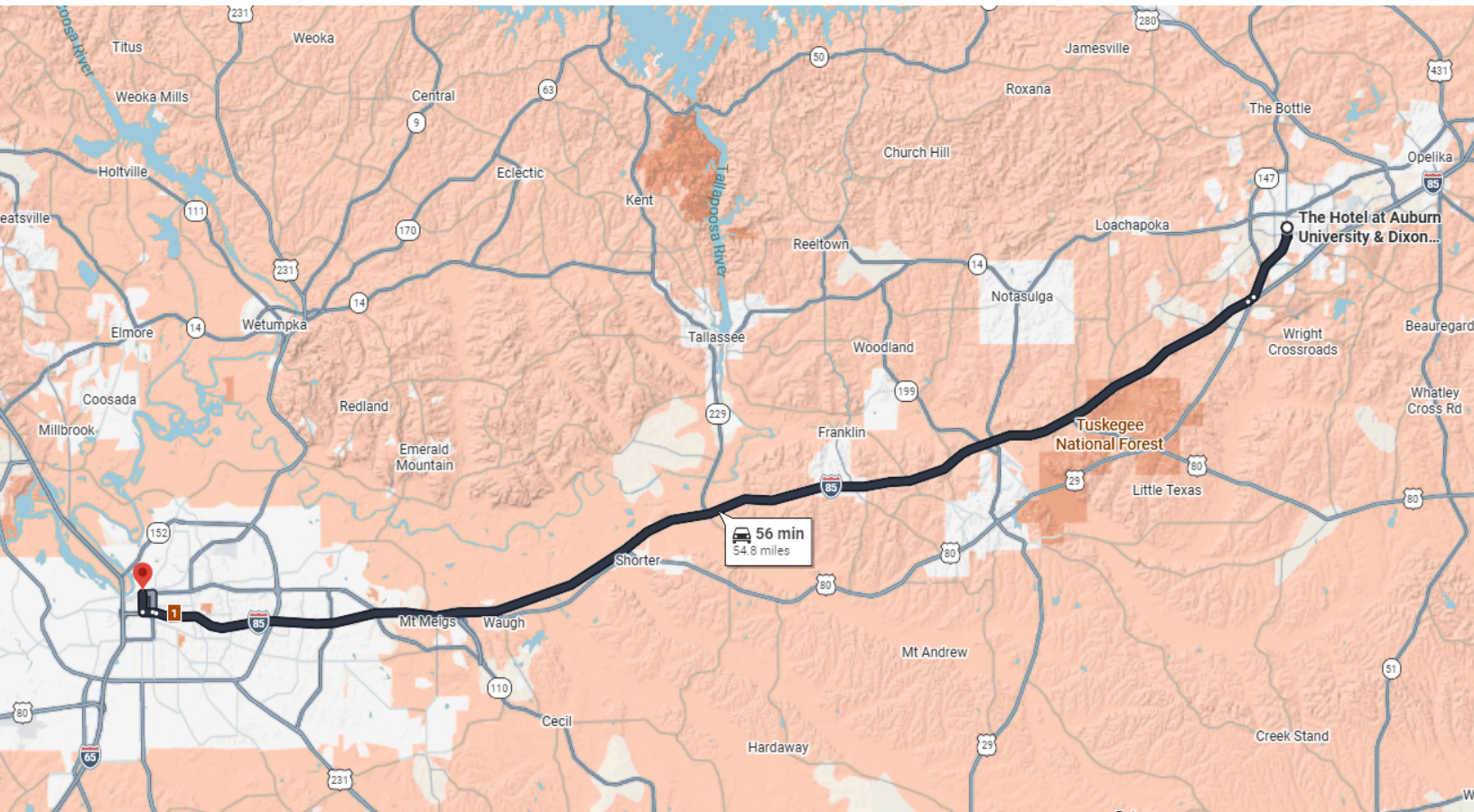
Other

- **Commodore Museum:** *A spot where famous music, including Commodores hits, was recorded.*
- **Lionel Richie's Childhood Home:** *See the exterior of the house where the famous singer grew up.*



Explore Montgomery, AL

Montgomery, Alabama, is the state capital and a historic city of over 200,000 residents known as a birthplace of the Civil Rights Movement and the first capital of the Confederacy. Located on the Alabama River, it blends southern charm with modern industry, featuring major sites like the Rosa Parks Museum, Civil Rights Memorial, and the Legacy Museum



1 HR DRIVE

Montgomery, AL (1 hour drive)



Civil Rights Memorial Center Alabama's Premier Civil Rights Site (\$5 admission)

A project of the Southern Poverty Law Center (SPLC), it is one of Alabama's premier civil rights sites and serves as the interpretive center for the Civil Rights Memorial, which honors the martyrs of the movement and inspires visitors to continue the march for racial equity and social justice.

The CRMC and the Memorial are located just around the corner from the historic church where Martin Luther King Jr. served as pastor during the Montgomery Bus Boycott and the Alabama Capitol steps, where King spoke to thousands at the conclusion of the Selma-to-Montgomery voting rights march.

Inside the Martyr Room, visitors will learn about the 40 people whose names are inscribed on the Civil Rights Memorial.

The Orientation Theater connects the civil rights movement of the 1950s and 1960s to social justice activism today.

The March Continues - The power of grassroots organizing and mobilization helps us understand that ordinary people can make a difference.

Wall of Justice - A space for reflection and a testament to people, past and present, who are committed to making manifest the ideals of justice, equity, diversity and inclusion for all.

The Memorial, dedicated in 1989, was designed by Maya Lin, who found inspiration in the paraphrase from Amos 5:24 that King used in his "I Have a Dream" speech: "We will not be satisfied until justice rolls down like waters and righteousness like a mighty stream." On the Memorial's circular, black granite table, water emerges from the center and flows evenly across a timeline, reminiscent of a sundial, that chronicles the major events of the movement and records the names of 40 men, women and children who were killed during the struggle. Behind the table, a thin sheet of water flows down a 40-foot-long curved, black granite wall on which the words "*until justice rolls down like waters and righteousness like a mighty stream*" are inscribed.



[Alabama State Capitol](#) (free admission) 8am-4pm

Guided tours are offered for 15 or more by appointment only. Contact the tour office at [334-242-3935](tel:334-242-3935) or capitol tours@ahc.alabama.gov.

The Alabama State Capitol, a working museum, underwent a major restoration in 1992. Restored areas open to the public include the House of Representatives, Senate Chamber, Old Supreme Court Chamber & Library, and Rotunda.

The Senate Chamber is restored to its 1861 appearance. Its ceiling is trompe l'oeil - a style of painting in which objects are depicted with photographically realistic detail. Eight murals located in the Rotunda depict episodes from Alabama history. This work demonstrates Roderick MacKenzie's proven abilities with large-scale painting. Monuments, statues, and gardens are contained on the five-acre grounds surrounding the capitol.

The [Goat Hill Museum Store](#) specializes in books by Alabama authors, artist-made items, food, unique gifts, and souvenirs. Hours 8-4:30.

[Old Alabama Town - Tour Landing](#) (Old Alabama Town is open for self-guided tours - Wednesday through Saturday, from 10:00am. to 4:00pm. Of museum buildings and a guided tour of our 1850 Italianate Ordeman/Shaw complex. The Ordeman house was built by a German Architect and is located on the original grounds.





[MMFA – Montgomery Museum of Fine Arts](#)

Open Tue-Sun 10am-5pm

Free Admission

We ask that groups of ten or more visitors who want to visit the Museum notify the Tour Coordinator at least 48 hours beforehand in case there are any circumstances that would affect your visit.

For those interested in a guided tour of our collection, special exhibitions, Garden or other inquiries please contact our Tour Coordinator for more information about scheduling and fees.



[Blount Cultural Park – MMFA](#)

This 175-acre park is home to the Montgomery Museum of Fine Arts, the Alabama Shakespeare Festival, and the Hannah Daye Ridling Bark Park. Featuring ponds, miles of walking trails, a natural amphitheater, and picturesque scenery, Blount Cultural Park is open every day of the week. While the park itself closes at sundown each day, check MMFA and ASF schedules for exceptions.

Alabama Shakespeare Festival Broadway comedy “Chicken & Biscuits” [Chicken & Biscuits | Alabama Shakespeare Festival](#) A hilariously dysfunctional family and a funeral you’ll never forget. Show starts at 2pm \$30-70.



[Montgomery Whitewater](#)

Ropes and Ziplines (\$39) -Ropes courses feature dynamic challenges such as ziplines, swinging bridges, cargo nets, and climbing obstacles. The Aerial Ropes Course features two separate zipline courses with 16 elements and 7 zipline segments that range from 50 to 165 feet long. This self-navigating course typically takes 90 minutes to complete.

Mountain Biking, Running, & Walking Trails - Three miles of beginner-level trails, open to mountain bikers, hikers and trail runners. Enjoy scenic views of the Alabama River on our mixed-use trail system. The trails are free to use and do not require a pass.

Rock Climbing Wall – free to all ages



Whitewater tubing at Montgomery Whitewater is a fast-paced, hands-on, self-guided adventure activity where participants navigate a controlled whitewater course in a specially designed inflatable tube. Unlike traditional river tubing, this experience includes waves, currents, obstacles, and quick turns, requiring active participation and movement. Whitewater tubing is not a lazy river experience. Participants should be prepared for active movement and a fully immersive whitewater experience. Riders steer using their hands as they travel through our channel system, encountering waves, currents, and obstacles along the way. Whitewater tubing is a great way to experience the energy of the course in a seated, individual ride format.

Ages 8 and up \$25



Kayaking - Perfect for beginners to intermediate paddlers and rafters, the channels mimic a natural river.

The 2,200-foot-long Creek Channel is designed for a Class II whitewater experience and is an excellent introduction to whitewater. A step up from the Creek Channel, the 1,600-foot-long Competition Channel is an incredible playground for those with more advanced skills and is ideal for even the novice rafter looking to take on bigger rapids. Both channels intersect in the lower pond to the takeout or back up the conveyor belt for another run!

\$25



Whitewater Ducky - Perfect for beginners to intermediate paddlers and rafters, the channels mimic a natural river. The 2,200-foot-long Creek Channel is designed for a Class II whitewater experience and is an excellent introduction to whitewater. A step up from the Creek Channel, the 1,600-foot-long Competition Channel is an incredible playground for those with more advanced skills and is ideal for even the novice rafter looking to take on bigger rapids. Both channels intersect in the lower pond to the takeout or back up the conveyor belt for another run!

Ages 14 and up \$25-



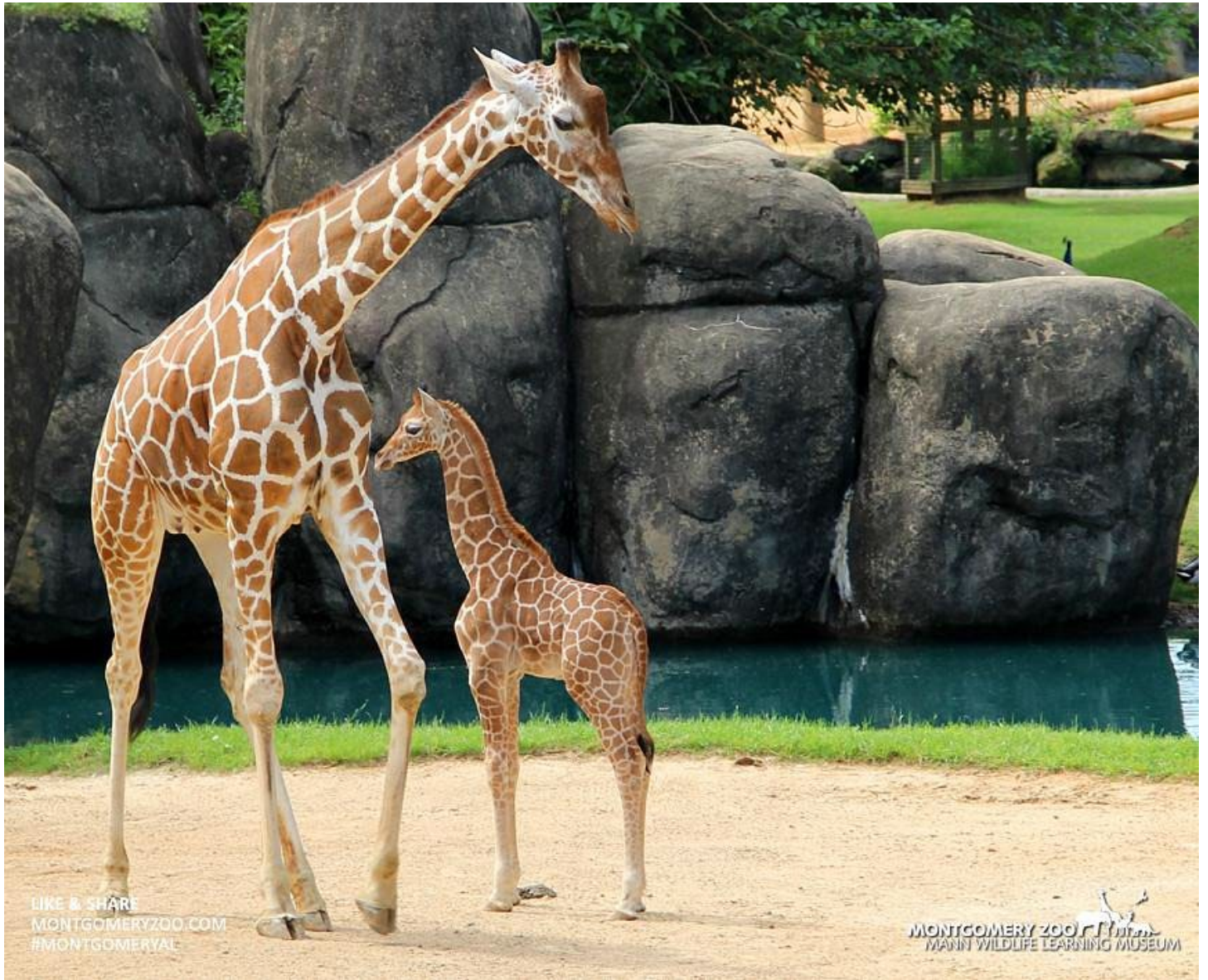
Flatwater Activities - For those wanting to beat the heat and relax on the water, join us for flatwater activities on the lower pond before we turn the channels on. Sit-on-top kayaks, stand-up paddleboards (SUPs), and inflatable kayaks (duckies) are available!

Ages 6 and up \$15-25



Whitewater Rafting -Perfect for beginners to intermediate paddlers and rafters, the channels mimic a natural river. The 2,200-foot-long Creek Channel is designed for a Class II whitewater experience and is an excellent introduction to whitewater. A step up from the Creek Channel, the 1,600-foot-long Competition Channel is an incredible playground for those with more advanced skills and is ideal for even the novice rafter looking to take on bigger rapids. Both channels intersect in the lower pond to the takeout or back up the conveyor belt for another run!

Ages 11 and up \$29



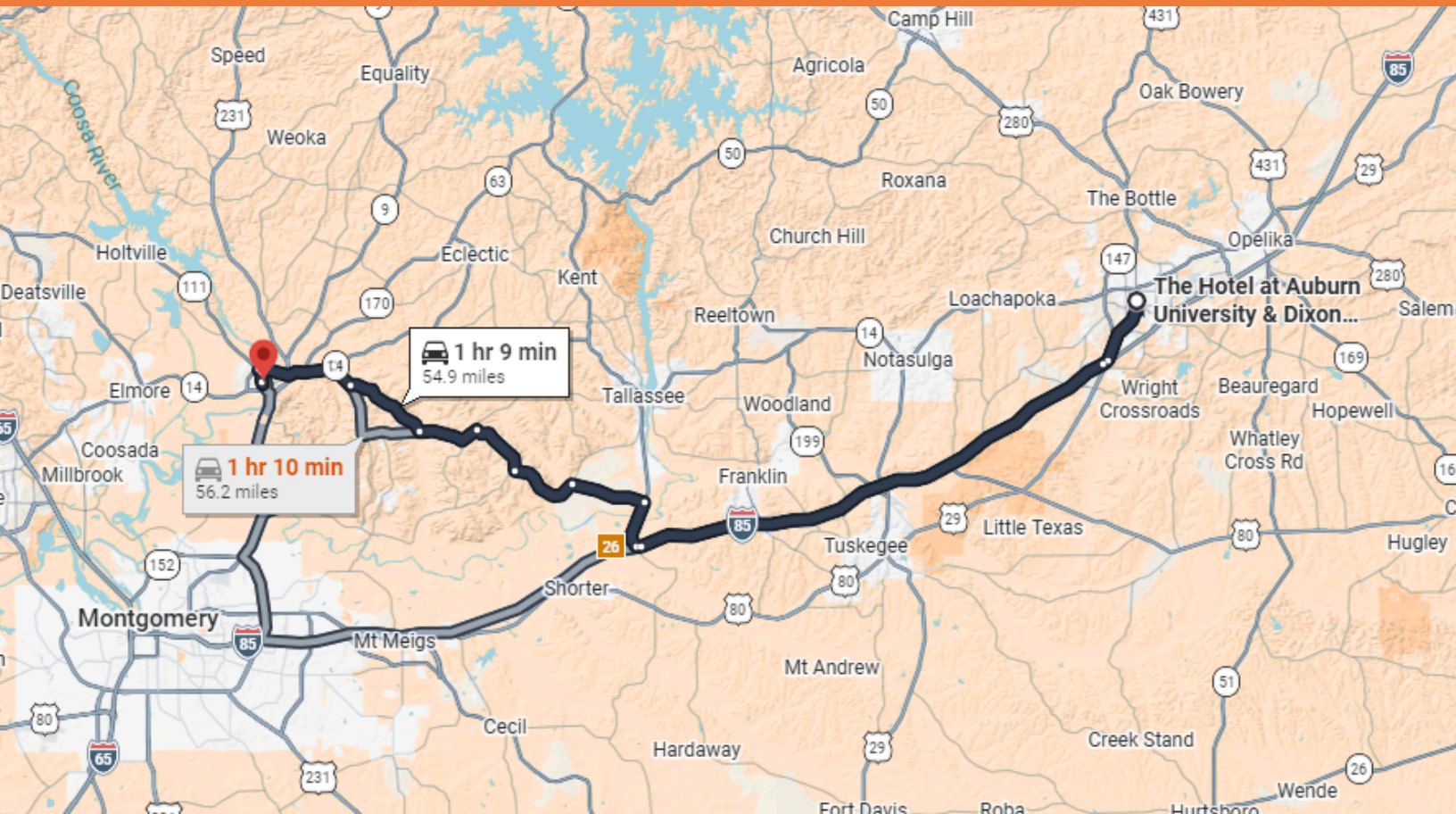
The Montgomery Zoo and Mann Wildlife Learning Museum is a 42-acre zoological facility located minutes from the heart of historic, downtown Montgomery, Alabama. The Montgomery Zoo features a variety of exotic animals native to Africa, Asia, Australia, North America, and South America. A trademark addition of the Zoo is the Mann Wildlife Learning Museum, housing the one of the Southeast's largest collections of preserved North American wildlife, artifacts, and fossils.



[The Shoppes at East Chase](#)

Explore Wetumpka, AL

Wetumpka, Alabama, known as the "City of Natural Beauty," is the county seat of Elmore County, located on the Coosa River near a 85-million-year-old meteor impact crater. With a population of over 7,000, it is a fast-growing city in the Montgomery Metropolitan Area that features historic downtown, popular outdoor activities like kayaking, and the Wind Creek Casino



1 HR DRIVE

Wetumpka, AL (1 hour drive)

[Wetumpka, AL | Official Website](#)

Small town vibe – with boutique shopping and Brewery

Jackson Lake Island – movie set for Big Fish movie ([1](#)) [Facebook](#) (if there has been heavy rain, the road is closed)

[Coosa River Adventures](#) kayaking the Coosa River follow up at Coosa Craft House for a beer and downtown view



The [Wetumpka Impact Crater](#) is a rare geological treasure that tells the story of a dramatic asteroid strike roughly 85 million years ago. Measuring nearly five miles wide, it is recognized as one of the best-preserved marine impact sites in the world. Visitors can experience this remarkable landmark in multiple ways. The annual guided tour, led by expert geologists, offers a deep dive into the crater's history, science, and significance. For those who prefer to explore at their own pace, a self-guided driving tour with maps and informational stops is available through the Wetumpka Impact Crater Discovery & Visitors Center. The center also features interactive exhibits, educational displays, and unique souvenirs that help bring the story of the crater to life. Conveniently located near Wetumpka's historic downtown, the crater is the perfect addition to a day of discovery, blending natural history, science, and small-town charm.



AUBURN UNIVERSITY RURAL STUDIO – Newbern, AL - 2 ½ hours

<https://ruralstudio.org/>

Rural Studio® is an off-campus design-build program, rooted in Hale County and part of the School of Architecture, Planning and Landscape Architecture of Auburn University. Our core mission is the education of our students, coupled with research on sustainable, healthful rural living through both housing and the vital systems we foster to ensure our communities thrive. We are committed to cultivating students who are both local architects and citizens of the world.

Want to come see what we are doing in Hale County in person?

Self-guided:

Information and a map of Rural Studio public projects are available at Morrisette House (our main office), which is open Monday through Friday, 8:30am – 4:30pm. Stop by and sign our guest book! We encourage you to visit our campus and public projects at your leisure, but ask that you be respectful of our clients' and students' privacy.

Guided tours: AU Offices are closed on Friday, June 19th.

We offer guided tours by appointment only. Weekends preferred. If you would like to learn more about guided tours and fees, please email us at rstudio@auburn.edu or call 334.624.4483.

During most full-day guided tours, you can expect to visit the following projects:

Newbern projects: Morrisette campus projects, 3 Model Homes, Newbern Firehouse, Newbern Town Hall, Newbern Library, and our studio, the Red Barn.

Greensboro projects: all Lions Park projects, Greensboro Boys & Girls Club, and the Safe House Museum (time permitting)

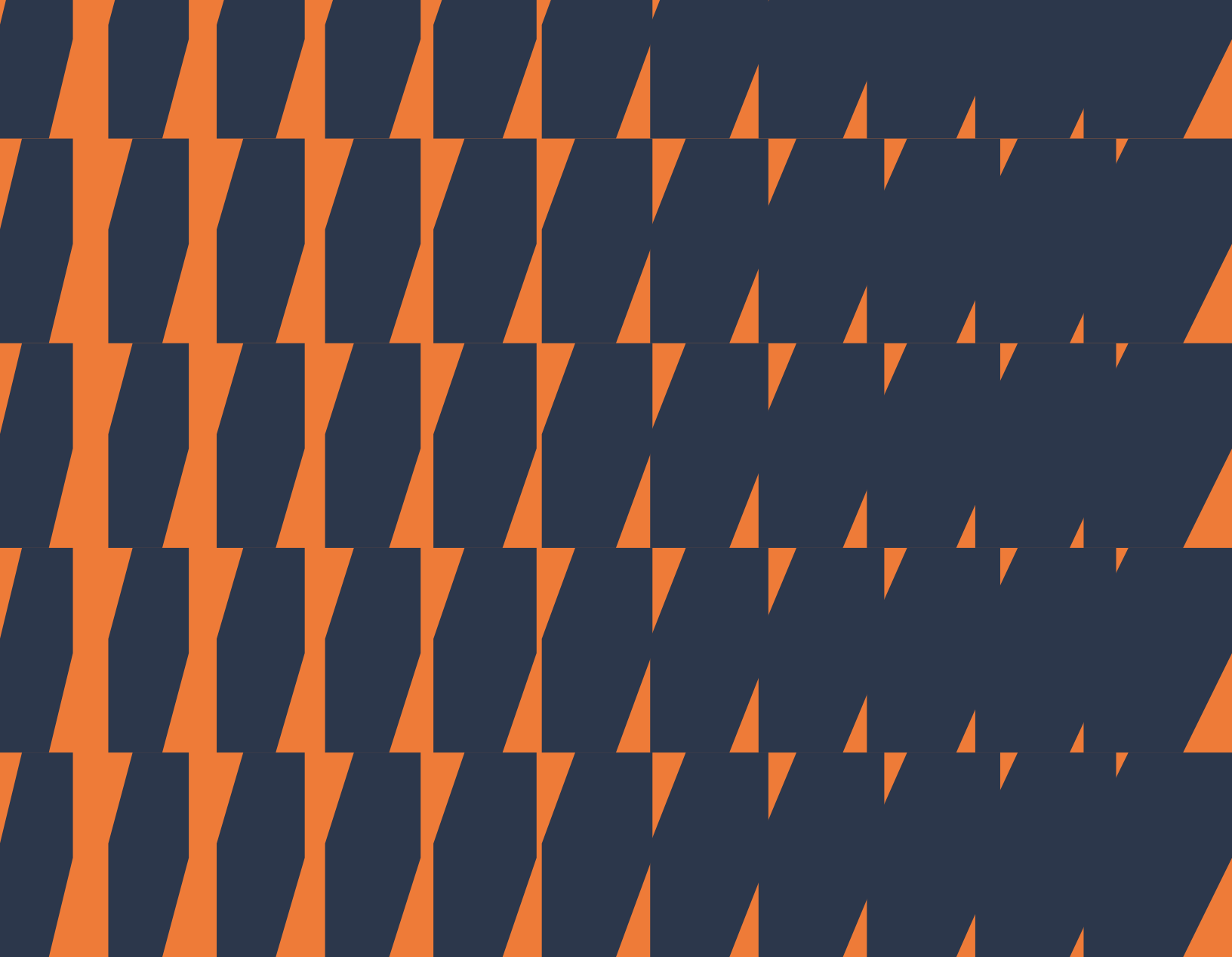
Perry Lakes Park projects: pavilion, bridge, restrooms, and tower

Directions:

Our headquarters are at Morrisette House, located in Newbern, AL, along Alabama Highway 61. Morrisette House is the cream/pale yellow house with a black iron gate and Auburn flag in the front yard. If you're coming from the north, the house is 0.5 miles beyond downtown Newbern on your right. If you're coming from the south, the house is on your left; if you reach downtown Newbern, you've gone too far. [View our location on Google Maps.](#)

Tips for visiting us

- Wear comfortable, durable shoes. It can be quite muddy here during wet seasons. You may be guided through active construction sites, so please be prepared!
- You will be outside for much of the tour. Bring a hat and sun protection.
- Note: We're located in a rural community with limited access to cell service and internet.



**GEORGIA
ON
YOUR
MIND?**

Is Georgia on your mind? Head East and you'll find...

Pine Mountain, GA – (1 hour drive)

Pine Mountain Trail Association - GA - Home

F.D. Roosevelt State Park | Department Of Natural Resources Division

At 10,874 acres, Georgia's largest state park is a hiker's and backpacker's haven. More than 40 miles of trails, including the popular 23 mile Pine Mountain Trail, wind through hardwood and pines, over creeks and past small waterfalls. Many visitors are surprised to find rolling mountains 80 miles southwest of Atlanta. Above King's Gap is Dowdell's Knob where President Franklin D. Roosevelt sometimes picnicked and pondered world affairs. A life-size sculpture of the president now welcomes visitors to the overlook.

Several park amenities were built by the Civilian Conservation Corps during the Great Depression, including cottages and the Liberty Bell swimming pool fed by cool springs. A wooded campground sits near the edge of a small fishing lake, and privately operated stables offer guided horseback rides. In 1924, FDR came to this part of Georgia to swim in naturally warm springs that offered relief from polio. Today, nearby Roosevelt's Little White House State Historic Site invites visitors to see his modest home, a museum and the pools that first drew him here.



Callaway Resort & Gardens | Family Fun In Pine Mountain, GA (1 hour drive)

Robin Lake Beach, America's largest inland white sand beach, like Aqua Island, paddle boarding and more. Plus, explore everything the Gardens has to offer, including 10 miles of trails, two championship golf courses, Cecil B. Day Butterfly Center and one-of-a-kind Birds of Prey show.

Nestled in a serene forest surrounding Falls Creek Lake, the [Ida Cason Callaway Memorial Chapel](#) was carefully planned by Cason Callaway himself as a tribute to his mother. Inspired by 16th-century Gothic chapels, it is highlighted by a variety of materials native to the region, including fieldstone quartz. Beautifully crafted stained glass windows depict Georgia pines, softwoods, and hardwoods, coming to life in vibrant colors as the four seasons progress. The majestic sounds of the chapel's custom-built Möller pipe organ ring out during seasonal concerts.

Callaway [Trails](#) - [Fishing & Boating](#) - [TreeTop Adventure Ziplines](#) - [Rental Bikes](#) - [Spa](#)



LaGrange, GA- (45 minute drive)

[Homepage - Hills & Dales Estate](#)

[Nutwood Winery](#)

[Wild Leap Brewery](#)

[West Point Lake – Biking, hiking, boat rentals](#)

[Explore this historic downtown square](#)

[Providence Canyon State Park | Department Of Natural Resources Division](#)

[Indoor Water Park & Resort in Atlanta, GA | Great Wolf Lodge](#)



Warm Springs, GA & LaGrange – (1 hour drive)

Warm Springs GA-

Roosevelt's Little White House State Historic Site | Department Of Natural Resources Division



Columbus, GA- 45 min

History & Museums:

- National Infantry Museum: Explore the history of the U.S. Army Infantry with extensive exhibits.
- National Civil War Naval Museum: Discover naval history, featuring Civil War era ships like the CSS Jackson.
- Columbus Museum: Features art and regional history.
- Columbus Collective Museums: A fun stop for vintage toys, radios, and cars.

Science & Space:

- Coca-Cola Space Science Center: Interactive exhibits, a planetarium, and NASA artifacts.

Outdoors & River Activities:

- Chattahoochee RiverWalk: Miles of paved paths for walking, biking, and enjoying the river.
- Whitewater Express: Experience the longest urban whitewater course in the world.
- Flat Rock Park: Offers disc golf, trails, and an event space.
- Oxbow Meadows Environmental Learning Center: Connect with nature.

Arts & Entertainment:

- Springer Opera House: Catch a show at this historic, restored theater.
- RiverCenter for the Performing Arts: Hosts various performances.
-





**WANT TO GO
FURTHER
THAN A "STONES
THROW AWAY..."?**

Want to wander further? Just a "stones throw away"....

Birmingham, AL just two hours away

Atlanta, GA just under two hours away

Cheaha State Park (1 ½ hours) <https://www.alapark.com/parks/cheaha-state-park>

North Georgia Mountains (3 hours)

Huntsville, AL (3 ½ hours)

Alabama Gulf Coast Beaches (4 hours)

